

Fig 11 : Top side of the display PCB.

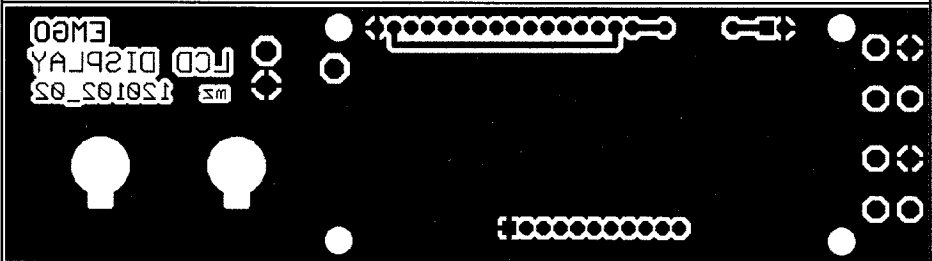


Fig 12 : Bottom side of the display PCB.

rectly. Start by adjusting the core of L5 using a non-metallic screwdriver and watching the voltmeter for changes in the control voltage of the PLL. The measured voltage should not remain fixed at

either extreme, i.e. 0.2V or 4.3V. If the PLL is working, the tuning voltage should vary smoothly between 0.2V and 4.2V as the position of the core in L5 is changed.

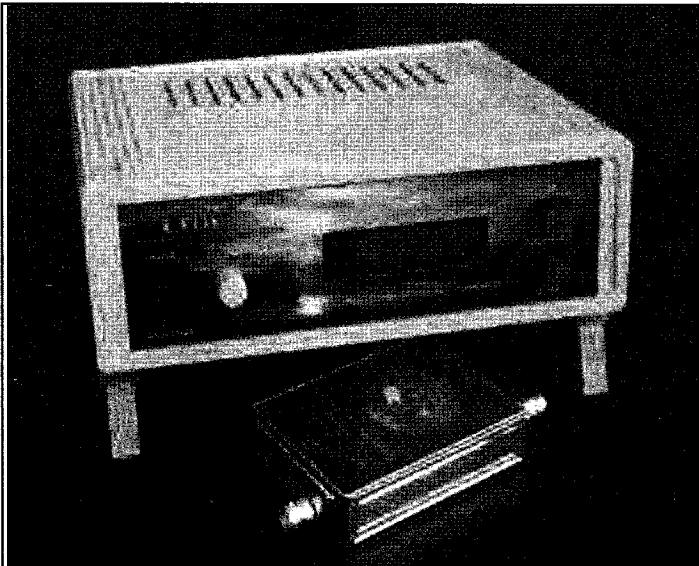


Fig 13 : Completed receiver in a plastic case.